

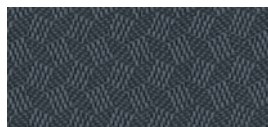
Multi-Function Chair with Arms

- Durable, patterned black or charcoal grey fabric upholstery
- Infinite seat tilt lock with tilt tension adjustment
- Back angle adjustment
- Pneumatic seat height adjustment
- Scuff resistant arched molded base with twin wheel carpet casters
- Height adjustable armrests with pivot feature
- Forward tilt control
- Adjustable height lumbar adjustment
- Dimensions: 25"D x 27"W x 39"H

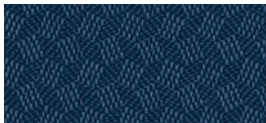
Standard Textiles



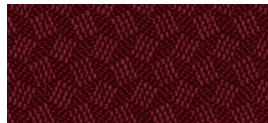
QL10 Black (stocked)



QL11 Charcoal Grey (stocked)



QL14 Navy (standard)



QL16 Wine (standard)

In addition to the stocked textiles (QL10 Black and QL11 Charcoal Grey), this chair can be upholstered using any QUILT fabric selections shown below or in other textiles shown on the back of this brochure. An upcharge applies except for colors QL10 Black, QL11 Charcoal Grey, QL14 Navy and QL16 Wine.



QL12 Violet



QL13 Poppy



QL15 Marine



QL17 Mint



QL18 Forrest



QL19 Silver

OTG11653-QL10



Shown in QL10 Black (stocked)

OTG11653-QL15 (front view)

OTG11653-QL11 (side view)



Shown in QL15 Marine (available)



Shown in QL11 Charcoal Grey (stocked)

